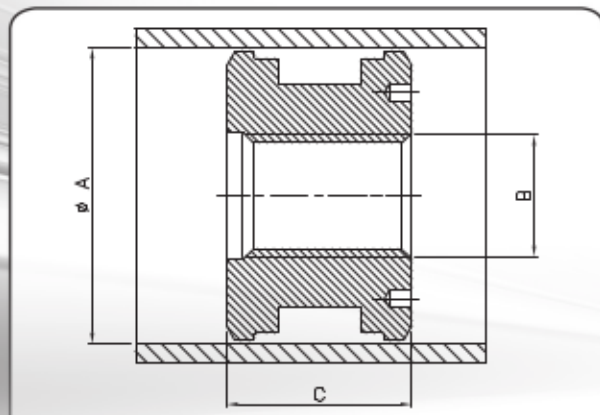




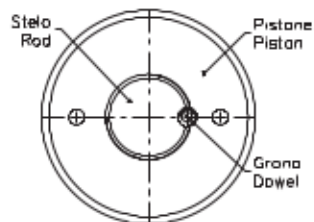
EPF

PISTONE FILETTATO THREADED PISTON

- MATERIALE Acciaio AVP (9 SMn Pb 28)
- MATERIAL Steel AVP (9 SMn Pb 28)



| SIGLA CODE | Q.TÀ MINIMA (E/O MULTIPLI) MINIMUM Q.TY (AND/OR MULTIPLES) | Ø A | B | C | D | Ø E | PESO WEIGHT kg. |
|----------------------|---|-----|--------|----|----|-----|-----------------------|
| EPF 060024045 | 8 pz/pcs | 60 | M 24x2 | 45 | 21 | 3,5 | 0,59 |
| EPF 063024045 | 8 pz/pcs | 63 | M 24x2 | 45 | 21 | 3,5 | 0,67 |
| EPF 070024050 | 7 pz/pcs | 70 | M 24x2 | 50 | 21 | 3,5 | 0,91 |
| EPF 070027050 | 7 pz/pcs | 70 | M 27x2 | 50 | 24 | 3,5 | 0,89 |
| EPF 080033050 | 7 pz/pcs | 80 | M 33x2 | 50 | 30 | 3,5 | 1,13 |
| EPF 090033050 | 7 pz/pcs | 90 | M 33x2 | 50 | 30 | 3,5 | 1,56 |
| EPF 100033050 | 7 pz/pcs | 100 | M 33x2 | 50 | 30 | 3,5 | 1,97 |



- È consigliabile bloccare il pistone filettato con un grano M6 tra pistone e stelo, utilizzando un'adesivo frenafilo tipo Loctite (vedi figura)
- It is suggested to lock the threaded piston by means of a security dowel M6 between the piston and the rod, using a threadlocking adhesive, like Loctite's one. (see picture)