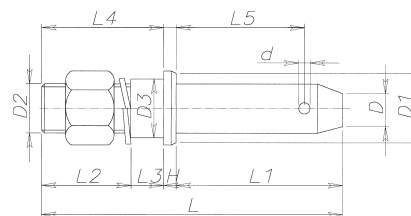


# SERIE PTT

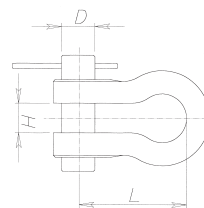


**PERNI ATTACCO ATTREZZI  
LOWER LINK PINS  
UNTERLENKERBOLZEN  
AXE ATTAQUE OUTILLAGE**



Cod.	D	D1	D2	D3	H	L	L1	L2	L3	L4	L5	d
<b>PTT 1064</b>	22	37	18x1,5	18	12	130	68	45	0,5	50	46	12
<b>PTT 1065</b>	22	35	20x1,5	20	12	130	70	46	0,5	50	46	12
<b>PTT 1060</b>	22	38	22x1,5	22	12	140	75	40	14	54	50	12
<b>PTT 1050</b>	22	38	22x1,5	28	12	140	73	40	14	55	50	12
<b>PTT 1070</b>	28	43	22x1,5	22	12	150	80	46	14	60	60	12
<b>PTT 1075</b>	28	42	22x1,5	24	12	150	80	45	14	60	55	12
<b>PTT 1080</b>	28	43	24x1,5	24	12	150	78	45	15	60	55	12
<b>PTT 1055</b>	28	43	22x1,5	28	12	150	80	40	20	60	60	12
<b>PTT 1085</b>	28	42	27x1,5	28	12	150	80	46	14	60	55	12

# SERIE GZ

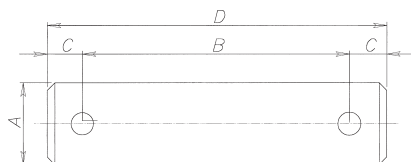


**GRILLI ZINCATI CON PERNO A COPPIGLIA  
SMACKLE WITH PIN  
SCHÄKELN MIT BOLZEN  
DISPOSITIF D'ACCROCHAGE AVEC LA BISCHE**



Cod.	Port. kg	D Ø mm.	D Ø poli	H mm.	L mm.
<b>GZ 1012</b>	850	12	1/2"	18	40
<b>GZ 1014</b>	850	14	9/16"	18	40
<b>GZ 1016</b>	950	16	5/8"	20	54

# SERIE PN



**PERNO - PIN  
BOLZEN - AXE**

Cod.	A	B	C	D
<b>PN 64</b>	18	52	6	64
<b>PN 74</b>	18	62	6	74
<b>PN 84</b>	18	72	6	84