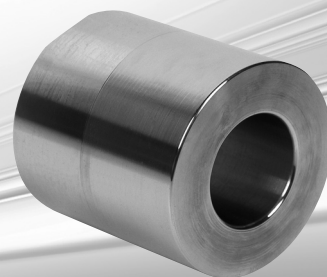


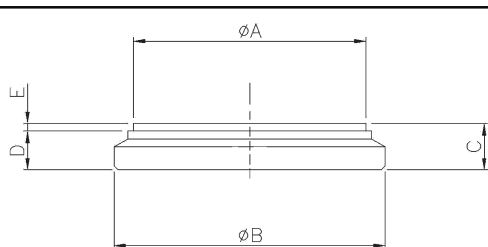
BS...

BOCCOLE A SALDARE WELDING BUSHES

- MATERIALE Acciaio FE510C (9SMn28)
- MATERIAL Steel FE510C (9SMn28)



SIGLA CODE	Ø F	Ø E	L	PESO WEIGHT kg.
BS163530	16,25	35	30	0,18
BS163560	16,25	35	60	0,36
BS204040	20,25	40	40	0,29
BS204070	20,25	40	70	0,50
BS255050	25,25	50	50	0,56
BS255080	25,25	50	80	0,89
BS255090	25,25	50	90	1,02
BS306060	30,25	60	60	0,97
BS3060110	30,25	60	110	1,79
BS407070	40,25	70	70	1,60
BS4070130	40,25	70	130	2,65



FD

FONDELLO END PLUG

- MATERIALE Acciaio FE510
- MATERIAL Steel FE510



SIGLA CODE	Ø A	Ø B	C	D	E	PESO WEIGHT kg.
FD 032P	32	42	8	6,3	1,7	0,06
FD 035P	35	45	10	8	2	0,10
FD 040P	40	50	10	8	2	0,13
FD 045P	45	55	10	8	2	0,16
FD 050P	50	60	10	8	2	0,19
FD 055P	55	65	12	10	2	0,28
FD 060P	60	70	12	10	2	0,33
FD 063P	63	73	12	10	2	0,35
FD 065P	65	75	12	10	2	0,38
FD 06580P	65	80	12	10	2	0,40
FD 070P	70	80	12	10	2	0,43
FD 07085P	70	85	12	10	2	0,45
FD 075P	75	90	12	10	2	0,53
FD 080P	80	90	12	10	2	0,55
FD 08092P	80	92	12	10	2	0,56
FD 08095P	80	95	12	10	2	0,58
FD 085P	85	100	15	13	2	0,77
FD 090P	90	105	15	13	2	0,86
FD 100P	100	115	15	13	2	1,05
FD 110P	110	125	15	13	2	1,34
FD 120P	120	140	18	16	2	2,00
FD 125P	125	145	18	16	2	2,11
FD 140P	140	160	18	16	2	2,67
FD 150P	150	170	20	18	2	3,33
FD 160P	160	180	20	18	2	3,79