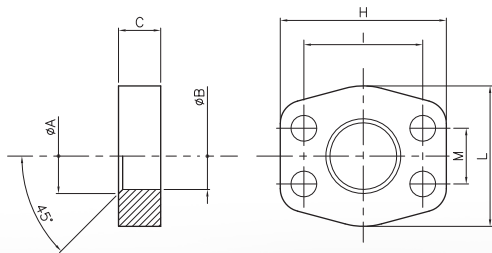


FTC60FG...

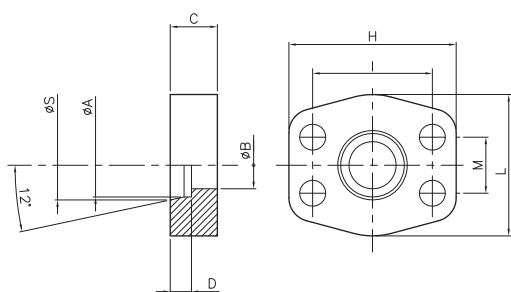
**FLANGIA PIATTA
CON FORO PASSANTE
FLAT FLANGE
WITH
THROUGH HOLE**



SIGLA CODE	S.A.E.	A	B	C	H	I	L	M	Pressione max Max. pressure bar
<i>Serie 6000 psi</i>									
FPP205E6	1/2"	22	20,5	14	57	40,49	46	18,24	420
FPP240E6	1/2"	27	24	14	57	40,49	46	18,24	420
FPP285E6	3/4"	32	28,5	18	71	50,8	60	23,8	420
FPP375E6	1"	43	37,5	22	81	57,15	70	27,76	420
FPP440E6	1" 1/4	49	44	25	95	66,68	78	31,75	420

FPT...

**FLANGIA PIATTA
CON TASCA
POCKET
FLAT FLANGE**



SIGLA CODE	S.A.E.	A	B	C	D	H	I	L	M	S	Pressione max Max. pressure bar
<i>Serie 6000 psi</i>											
FPT17E6	1/2"	17	14	14	9	57	40,49	46	18,24	19,5	420
FPT22E6	1/2"	22	16	14	9	57	40,49	46	18,24	24	420
FPT27E6	3/4"	27	20	20	9	71	50,8	60	23,8	29,5	420
FPT34E6	1"	34	26	26	13	81	57,15	70	27,76	36	420
FPT43E6	1" 1/4	43	32	25	15,5	95	66,68	78	31,75	46	420