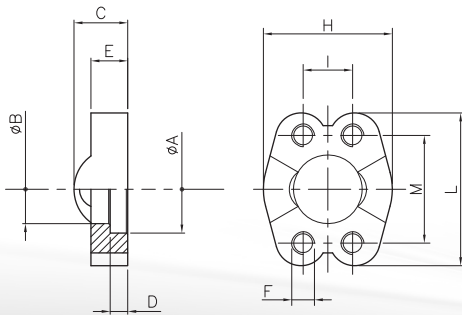


SIFU...

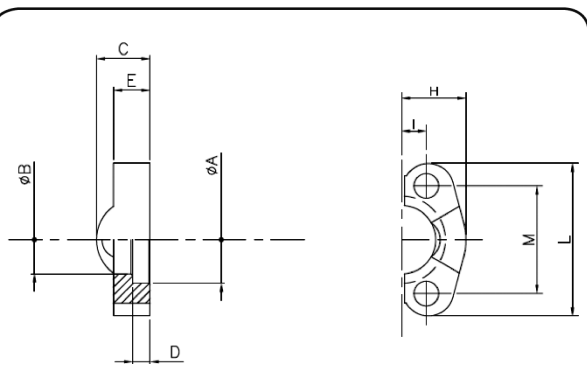
**SEMIFLANGE INTERE
CON FORI DI FISSAGGIO
FILETTATI UNC**
**WHOLE SPLIT
FLANGES WITH
UNC THREADED
FIXING HOLES**



SIGLA CODE	S.A.E.	A	B	C	D	E	F	H	I	L	M	Pressione max Max. pressure bar
<i>Serie 3000 psi</i>												
SIFU012E3	1/2"	30,96	24,26	19	6,22	13	5/16 UNC	46	17,48	57	38,1	348
SIFU034E3	3/4"	39,01	32,13	22	6,22	14	3/8 UNC	50	22,23	65	47,63	348
SIFU001E3	1"	45,24	38,48	24	7,49	16	3/8 UNC	60	26,19	71	52,37	348
SIFU114E3	1" 1/4	51,59	43,86	22	7,49	14	7/16 UNC	70	30,18	81	58,72	278
SIFU112E3	1" 1/2	61,13	50,8	25	7,49	16	1/2 UNC	78	35,71	95	69,85	210
SIFU002E3	2"	72,24	62,74	26	9,02	16	1/2 UNC	95	42,88	102	77,77	210
<i>Serie 6000 psi</i>												
SIFU012E6	1/2"	32,54	24,64	22	7,24	16	5/16 UNC	46	18,24	57	40,49	420
SIFU034E6	3/4"	42,06	32,51	28	8,26	19	3/8 UNC	60	23,8	71	50,8	420
SIFU001E6	1"	48,41	38,86	33	9,02	24	7/16 UNC	70	27,76	81	57,15	420
SIFU114E6	1" 1/4	54,76	44,45	38	9,78	27	1/2 UNC	78	31,75	95	66,68	420
SIFU112E6	1" 1/2	64,29	51,56	43	12,07	30	5/8 UNC	95	36,5	112	79,38	420
SIFU002E6	2"	80,16	67,56	52	12,07	37	3/4 UNC	114	44,45	134	96,82	420

ST...

**SEMIFLANGE
TAGLIATE
CUT SPLIT
FLANGES**



SIGLA CODE	S.A.E.	A	B	C	D	E	H	I	L	M	Viti Bolts	Pressione max Max. pressure bar
<i>Serie 3000 psi</i>												
ST012E3	1/2"	30,96	24,26	19	6,22	13	22,8	8,74	54	38,10	M8x30	348
ST034E3	3/4"	38,89	32,13	22	6,22	14	25,9	11,13	65	47,63	M10x35	348
ST001E3	1"	45,24	38,48	24	7,49	16	29,2	13,08	70	52,37	M10x35	348
ST114E3	1" 1/4	51,59	43,69	22	7,49	14	36,3	15,09	79	58,72	M10x35	278
ST112E3	1" 1/2	61,09	50,8	25	7,49	16	41,1	17,86	94	69,85	M12x35	210
ST002E3	2"	72,24	62,74	26	9,02	16	48,2	21,44	102	77,77	M12x35	210
<i>Serie 6000 psi</i>												
ST012E6	1/2"	32,54	24,64	22	7,24	16	23,6	9,12	56	40,49	M8x30	420
ST034E6	3/4"	42,06	32,51	28	8,26	19	30,0	11,91	71	50,80	M10x35	420
ST001E6	1"	48,41	38,86	33	9,02	24	34,8	13,89	81	57,15	M12x45	420
ST114E6	1" 1/4	54,76	44,45	38	9,78	27	38,6	15,88	95	66,68	M14x45	420
ST112E6	1" 1/2	64,29	51,56	43	12,07	30	47,5	18,26	113	79,38	M16x50	420
ST002E6	2"	80,16	67,56	52	12,07	37	56,9	22,23	133	96,82	M20x70	420