

SA

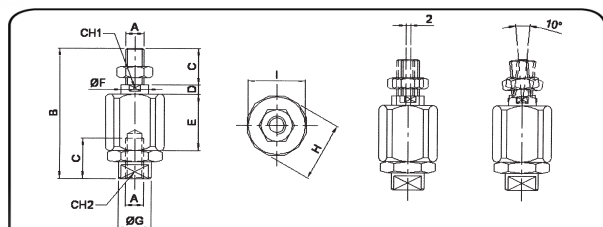
SNODI ANGOLARI CON TESTA SFERICA TEMPRATA

ANGULAR BEARINGS WITH HARDENED SPHERICAL BALL



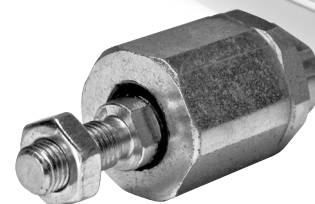
- MATERIALE: ACCIAIO SU ACCIAIO, ZINCATO
- METIERIAL: STEEK ON STEEL, GALVANIZED

SIGLA CODE	d ₁	d ₂	a	d ₃	d ₄	d ₆	e	h ₂	l ₂	l ₃	CH	α	PESO WEIGHT
													kg.
SA 05	8	M5	22	8	12.8	8	10.2	0.65	10	9	7	10	0.0152
SA 06	10	M6	25	10	14.8	10	11.5	0.70	12.5	11	8	12	0.0250
SA 08	13	M8	30	13	19.3	13	14	1.15	16.5	13	11	12	0.0530
SA 10	16	M10	35	16	24	16	15.5	1.15	20	16	13	12	0.1035
SA 14.1	19	M14X1.5	45	19	30	19	21.5	0.50	28	20	-	15	0.2209
SA 14	19	M14X2	45	19	30	19	21.5	0.50	28	20	-	15	0.2209



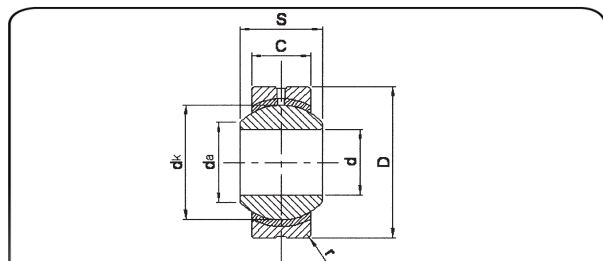
SAD

SNODI AUTOALLINEANTI SELF-ALIGNING BEARINGS



- MATERIALE: ACCIAIO SU ACCIAIO, ZINCATO
- METIERIAL: STEEK ON STEEL, GALVANIZED

SIGLA CODE	A	B	C	D	E	F	G	H	I	CH1	CH2	Ø CIL.	PESO WEIGHT
													kg.
SAD 06	M 6x1	35	10	3.5	17.5	6	8.5	14.5	13	5	7	16	0,025
SAD 08	M 8x1,25	57	20	4	28.8	8	12.5	19	17	7	11	25÷30	0,06
SAD 10.1	M 10x1,25	71	20	5	35	14	22	32	30	12	19	32	0,22
SAD 10	M 10x1,5	71	20	5	35	14	22	32	30	12	19	32	0,22
SAD12.1	M 12x1,25	75	24	5	35	14	22	32	30	12	19	40	0,23
SAD 12	M 12x1,75	75	24	5	35	14	22	32	30	12	19	40	0,23
SAD 16.1	M 16x1,5	103	32	8	54	22	32	45	41	20	30	50÷63	0,66
SAD 20.1	M20x1,5	119	40	8	54	22	32	45	41	20	30	80÷100	0,7



GE...PB

SNODI SFERICI SPHERICAL PLAIN BEARINGS



- ISO 12240-1
- ACCOPPIAMENTO: ACCIAIO SU BRONZO
- ISO 12240-4K
- COUPLING: STEEL / BRONZE

SIGLA CODE	d	S	C	d _a	D	r	d _k	FATTORI DI CARICO LOAD FACTOR (KN)		a	PESO WEIGHT
								C ₀	C		kg.
GE 5 PB	5	8	7	7.7	16	0.5	11.1	9.3	1.9	24	0.01
GE 6 PB	6	9	7	8.95	18	0.5	12.7	10.7	2.15	28	0.012
GE 8 PB	8	12	9	10.4	22	0.5	15.8	17.2	3.5	25	0.024
GE 10 PB	10	14	11	12.9	26	0.5	19.09	25.1	5	23	0.04
GE 12 PB	12	16	12	15.4	30	1	22.2	32	6.4	24	0.058
GE 14 PB	14	19	14	16.85	34	1	25.4	42.7	8.5	23	0.086
GE 15 PB	15	20	14	18.1	36	1	27	45.3	9	24	0.098
GE 16 PB	16	21	15	19.4	38	1	28.6	51.4	10.3	24	0.116
GE 17 PB	17	22	16	20.6	40	1	30.1	57.9	11.6	23	0.135
GE 18 PB	18	23	17	22	42	1.5	31.75	64.8	13	23	0.157
GE 20 PB	20	25	18	24.4	46	1.5	35	75.4	15	24	0.2
GE 22 PB	22	28	20	25.8	50	1.5	38.1	91.4	18.3	23	0.262
GE 25 PB	25	31	22	29.6	56	1.5	42.9	113.2	22.6	23	0.362
GE 28 PB	28	35	25	32.3	62	1.5	47.8	142.9	71.5	22	0.5
GE 30 PB	30	37	26	34.8	67	2	50.8	158.5	31.7	23	0.608