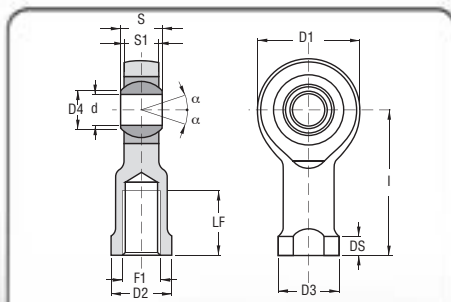


PNEUMATICA
PNEUMATICS





PFI...D

TERMINALI A SNODO

BALL JOINT ENDS

- ISO 12240-4K
- ACCOPPIAMENTO: ACCIAIO CROMATO SU BRONZO, ZINCATO
- ISO 12240-4K
- COUPLING: CHROMED STEEL + BRONZE, GALVANIZED



PFI...U

TERMINALI A SNODO

BALL JOINT ENDS

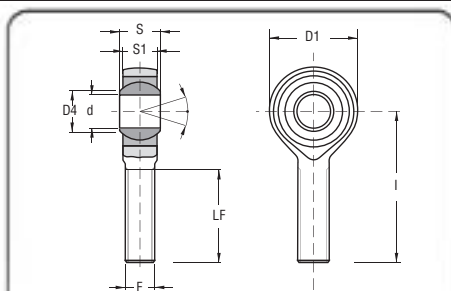
- ISO 12240-4K
- ACCOPPIAMENTO: ACCIAIO CROMATO SU PTFE, ZINCATO
- ISO 12240-4K
- COUPLING: CHROMED STEEL + PTFE, GALVANIZED



| PFI...D | PFI...U | d | D4 | S | S1 | D1 | F | I | LF | D3 | DS | D2 | FATTORI DI CARICO LOAD FACTOR | | ANGOLO DI OSCILLAZIONE ANGLE OF OSCILLATION | PESO WEIGHT |
|--------------------|-----------|-------|------|----|----|-----|----------|-----|----|----|-----|----|----------------------------------|-------------------------|--|----------------|
| SIGLA CODE * | | (h 7) | | | | | | | | | | | Statico C0 Static CO | Dinamico C Dynamic C | α | kg. |
| PFI 5D | PFI 5U | 5 | 7,7 | 8 | 7 | 16 | M5x0,8 | 27 | 8 | 12 | 4 | 9 | 3,2 | 7 | 13° | 0,018 |
| PFI 6D | PFI 6U | 6 | 9 | 9 | 7 | 18 | M6x1 | 30 | 9 | 13 | 5 | 11 | 3,5 | 8 | 13° | 0,026 |
| PFI 8D | PFI 8U | 8 | 10,4 | 12 | 9 | 22 | M8x1,25 | 36 | 12 | 16 | 5 | 14 | 5,8 | 13 | 13° | 0,045 |
| PFI 10D | PFI 10U | 10 | 12,9 | 14 | 11 | 26 | M10x1,5 | 43 | 15 | 19 | 6,5 | 17 | 8,6 | 18 | 13° | 0,076 |
| PFI 10.1D | PFI 10.1U | 10 | 12,9 | 14 | 11 | 26 | M10x1,25 | 43 | 15 | 19 | 6,5 | 17 | 8,6 | 18 | 13° | 0,076 |
| PFI 12D | PFI 12U | 12 | 15,4 | 16 | 12 | 30 | M12x1,75 | 50 | 18 | 22 | 6,5 | 19 | 11,5 | 24 | 13° | 0,114 |
| PFI 12.1D | PFI 12.1U | 12 | 15,4 | 16 | 12 | 30 | M12x1,25 | 50 | 18 | 22 | 6,5 | 19 | 11,5 | 24 | 13° | 0,144 |
| PFI 14D | PFI 14U | 14 | 16,9 | 19 | 14 | 34 | M14x2 | 57 | 21 | 25 | 8 | 22 | 17,5 | 36 | 15° | 0,158 |
| PFI 16D | PFI 16U | 16 | 19,4 | 21 | 15 | 38 | M16x2 | 64 | 24 | 27 | 8 | 22 | 20 | 40 | 15° | 0,2 |
| PFI 16.1D | PFI 16.1U | 16 | 19,4 | 21 | 15 | 38 | M16x1,5 | 64 | 24 | 27 | 8 | 22 | 20 | 40 | 15° | 0,2 |
| PFI 17D | PFI 17U | 17 | 20,6 | 22 | 16 | 40 | M16x1,5 | 67 | 25 | 31 | 10 | 27 | 22 | 45 | 15° | 0,259 |
| PFI 18D | PFI 18U | 18 | 21,9 | 23 | 17 | 42 | M18x1,5 | 71 | 27 | 31 | 10 | 27 | 27 | 50 | 15° | 0,288 |
| PFI 20D | PFI 20U | 20 | 24,4 | 25 | 18 | 46 | M20x1,5 | 77 | 30 | 37 | 10 | 30 | 31 | 60 | 15° | 0,372 |
| PFI 22D | PFI 22U | 22 | 25,9 | 28 | 20 | 50 | M22x1,5 | 84 | 33 | 37 | 12 | 32 | 43 | 72 | 15° | 0,475 |
| PFI 25D | PFI 25U | 25 | 29,6 | 31 | 22 | 56 | M24x2 | 94 | 36 | 42 | 12 | 36 | 50 | 85 | 15° | 0,673 |
| PFI 28D | PFI 28U | 28 | 32,3 | 35 | 25 | 66 | M27x2 | 103 | 41 | 46 | 14 | 41 | 60 | 90 | 15° | 0,95 |
| PFI 30D | PFI 30U | 30 | 34,9 | 37 | 26 | 67 | M30x2 | 110 | 45 | 50 | 15 | 41 | 66 | 110 | 15° | 1,05 |
| PFI 30.1D | PFI 30.1U | 30 | 34,9 | 37 | 26 | 67 | M27x2 | 110 | 45 | 50 | 15 | 41 | 66 | 110 | 15° | 1,05 |
| | PFI 35U | 35 | 39,2 | 43 | 28 | 80 | M36x2 | 125 | 60 | 56 | 17 | 50 | 140 | 110 | 15° | 1,60 |
| | PFI 40U | 40 | 45,4 | 49 | 33 | 90 | M42x2 | 142 | 62 | 69 | 25 | 55 | 169 | 132 | 15° | 2,80 |
| | PFI 50U | 50 | 55,8 | 60 | 45 | 116 | M48x2 | 160 | 65 | 75 | 25 | 65 | 265 | 200 | 15° | 5,00 |

(*) DISPONIBILI SU RICHIESTA CON FILETTATURA SINISTRORSA (CODICE ARTICOLO PFL...D - PFL...U) (PREZZI DA CONCORDARE)
 (*) AVAILABLE ON DEMAND WITH A LEFT-HAND THREAD (ITEM CODE PFL...D - PFL...U) (PRICES TO BE AGREED)

SKF SIKB...M / SIKB...F • INA GIKFR...PB / GIKFR...PW



PFE...D

TERMINALI A SNODO

BALL JOINT ENDS

- ISO 12240-4K
- ACCOPPIAMENTO: ACCIAIO CROMATO SU BRONZO, ZINCATO
- ISO 12240-4K
- COUPLING: CHROMED STEEL + BRONZE, GALVANIZED



PFE...U

TERMINALI A SNODO

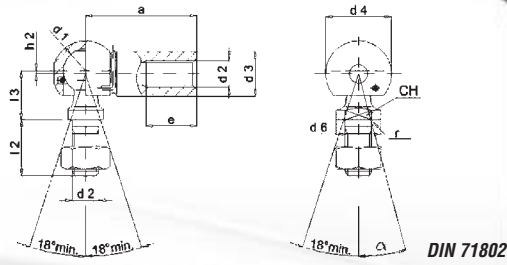
BALL JOINT ENDS

- ISO 12240-4K
- ACCOPPIAMENTO: ACCIAIO CROMATO SU PTFE
- ISO 12240-4K
- COUPLING: CHROMED STEEL + PTFE, GALVANIZED



| PFE...D | PFE...U | d | D4 | S | S1 | D1 | F | I | LF | FATTORI DI CARICO LOAD FACTOR | | ANGOLO DI OSCILLAZIONE ANGLE OF OSCILLATION | PESO WEIGHT |
|--------------------|---------|----|------|----|----|----|----------|-----|----|----------------------------------|-------------------------|--|----------------|
| SIGLA CODE * | | | | | | | | | | Statico C0 Static CO | Dinamico C Dynamic C | α | kg. |
| PFE 5D | PFE 5U | 5 | 7,7 | 8 | 7 | 16 | M5x0,8 | 33 | 20 | 3,2 | 7 | 13° | 0,014 |
| PFE 6D | PFE 6U | 6 | 9 | 9 | 7 | 18 | M6x1 | 36 | 22 | 3,5 | 8 | 13° | 0,019 |
| PFE 8D | PFE 8U | 8 | 10,4 | 12 | 9 | 22 | M8x1,25 | 42 | 25 | 5,8 | 13 | 13° | 0,036 |
| PFE 10D | PFE 10U | 10 | 12,9 | 14 | 11 | 26 | M10x1,5 | 48 | 29 | 8,6 | 18 | 13° | 0,06 |
| PFE 12D | PFE 12U | 12 | 15,4 | 16 | 12 | 30 | M12x1,75 | 54 | 33 | 11,5 | 24 | 13° | 0,089 |
| PFE 14D | PFE 14U | 14 | 16,9 | 19 | 14 | 34 | M14x2 | 60 | 36 | 17,2 | 36 | 15° | 0,129 |
| PFE 16D | PFE 16U | 16 | 19,4 | 21 | 15 | 38 | M16x2 | 66 | 40 | 20 | 40 | 15° | 0,181 |
| PFE 17D | PFE 17U | 17 | 20,6 | 22 | 16 | 40 | M16x1,5 | 69 | 42 | 22 | 45 | 15° | 0,206 |
| PFE 18D | PFE 18U | 18 | 21,9 | 23 | 17 | 42 | M18x1,5 | 72 | 44 | 27 | 50 | 15° | 0,25 |
| PFE 20D | PFE 20U | 20 | 24,4 | 25 | 18 | 46 | M20x1,5 | 78 | 47 | 31 | 60 | 15° | 0,333 |
| PFE 22D | PFE 22U | 22 | 25,9 | 28 | 20 | 50 | M22x1,5 | 84 | 51 | 43 | 72 | 15° | 0,43 |
| PFE 25D | PFE 25U | 25 | 29,5 | 31 | 22 | 56 | M24x2 | 94 | 57 | 50 | 85 | 15° | 0,575 |
| PFE 28D | PFE 28U | 28 | 32,3 | 35 | 25 | 66 | M27x2 | 103 | 62 | 60 | 90 | 15° | 0,8 |
| PFE 30D | PFE 30U | 30 | 34,9 | 37 | 26 | 67 | M30x2 | 110 | 66 | 66 | 110 | 15° | 0,996 |

(*) DISPONIBILI SU RICHIESTA CON FILETTATURA SINISTRORSA (CODICE ARTICOLO PFL...D - PFL...U) (PREZZI DA CONCORDARE)
 (*) AVAILABLE ON DEMAND WITH A LEFT-HAND THREAD (ITEM CODE PFL...D - PFL...U) (PRICES TO BE AGREED)



DIN 71802

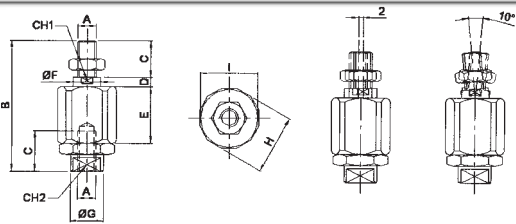
SA

SNODI ANGOLARI CON TESTA SFERICA TEMPRATA ANGULAR BEARINGS WITH HARDENED SPHERICAL BALL

- MATERIALE: ACCIAIO SU ACCIAIO, ZINCATO
- MATERIAL: STEEL ON STEEL, GALVANIZED



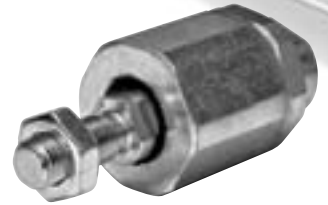
| SIGLA CODE | d1 | d2 | a | d3 | d4 | d6 | e | h2 | l2 | l3 | CH | α | PESO WEIGHT kg. |
|----------------|----|---------|----|----|------|----|------|------|------|----|----|----|-----------------|
| SA 05 | 8 | M5 | 22 | 8 | 12.8 | 8 | 10.2 | 0.65 | 10 | 9 | 7 | 10 | 0.0152 |
| SA 06 | 10 | M6 | 25 | 10 | 14.8 | 10 | 11.5 | 0.70 | 12.5 | 11 | 8 | 12 | 0.0250 |
| SA 08 | 13 | M8 | 30 | 13 | 19.3 | 13 | 14 | 1.15 | 16.5 | 13 | 11 | 12 | 0.0530 |
| SA 10 | 16 | M10 | 35 | 16 | 24 | 16 | 15.5 | 1.15 | 20 | 16 | 13 | 12 | 0.1035 |
| SA 14.1 | 19 | M14X1.5 | 45 | 19 | 30 | 19 | 21.5 | 0.50 | 28 | 20 | - | 15 | 0.2209 |
| SA 14 | 19 | M14X2 | 45 | 19 | 30 | 19 | 21.5 | 0.50 | 28 | 20 | - | 15 | 0.2209 |



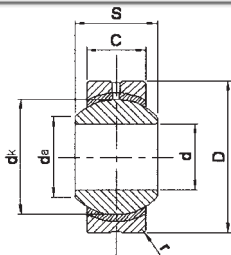
SAD

SNODI AUTOALLINEANTI SELF-ALIGNING BEARINGS

- MATERIALE: ACCIAIO SU ACCIAIO, ZINCATO
- MATERIAL: STEEL ON STEEL, GALVANIZED



| SIGLA CODE | A | B | C | D | E | F | G | H | I | CH1 | CH2 | Ø CIL. | PESO WEIGHT kg. |
|-----------------|-----------|-----|----|-----|------|----|------|------|----|-----|-----|--------|-----------------|
| SAD 06 | M 6x1 | 35 | 10 | 3.5 | 17.5 | 6 | 8.5 | 14.5 | 13 | 5 | 7 | 16 | 0,025 |
| SAD 08 | M 8x1,25 | 57 | 20 | 4 | 28.8 | 8 | 12.5 | 19 | 17 | 7 | 11 | 25÷30 | 0,06 |
| SAD 10.1 | M 10x1,25 | 71 | 20 | 5 | 35 | 14 | 22 | 32 | 30 | 12 | 19 | 32 | 0,22 |
| SAD 10 | M 10x1,5 | 71 | 20 | 5 | 35 | 14 | 22 | 32 | 30 | 12 | 19 | 32 | 0,22 |
| SAD12.1 | M 12x1,25 | 75 | 24 | 5 | 35 | 14 | 22 | 32 | 30 | 12 | 19 | 40 | 0,23 |
| SAD 12 | M 12x1,75 | 75 | 24 | 5 | 35 | 14 | 22 | 32 | 30 | 12 | 19 | 40 | 0,23 |
| SAD 16.1 | M 16x1,5 | 103 | 32 | 8 | 54 | 22 | 32 | 45 | 41 | 20 | 30 | 50÷63 | 0,66 |
| SAD 20.1 | M20x1,5 | 119 | 40 | 8 | 54 | 22 | 32 | 45 | 41 | 20 | 30 | 80÷100 | 0,7 |



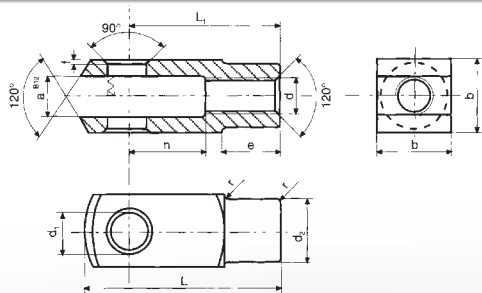
GE...PB

SNODI SFERICI SPHERICAL PLAIN BEARINGS

- ISO 12240-1
- ACCOPPIAMENTO: ACCIAIO SU BRONZO
- ISO 12240-4K
- COUPLING: STEEL / BRONZE



| SIGLA CODE | d | S | C | da | D | r | dk | FATTORI DI CARICO LOAD FACTOR (KN) | | a | PESO WEIGHT Kg. |
|-----------------|----|----|----|-------|----|-----|-------|------------------------------------|------|----|-----------------|
| | | | | | | | | Co | C | | |
| GE 5 PB | 5 | 8 | 7 | 7.7 | 16 | 0.5 | 11.1 | 9.3 | 1.9 | 24 | 0.01 |
| GE 6 PB | 6 | 9 | 7 | 8.95 | 18 | 0.5 | 12.7 | 10.7 | 2.15 | 28 | 0.012 |
| GE 8 PB | 8 | 12 | 9 | 10.4 | 22 | 0.5 | 15.8 | 17.2 | 3.5 | 25 | 0.024 |
| GE 10 PB | 10 | 14 | 11 | 12.9 | 26 | 0.5 | 19.09 | 25.1 | 5 | 23 | 0.04 |
| GE 12 PB | 12 | 16 | 12 | 15.4 | 30 | 1 | 22.2 | 32 | 6.4 | 24 | 0.058 |
| GE 14 PB | 14 | 19 | 14 | 16.85 | 34 | 1 | 25.4 | 42.7 | 8.5 | 23 | 0.086 |
| GE 15 PB | 15 | 20 | 14 | 18.1 | 36 | 1 | 27 | 45.3 | 9 | 24 | 0.098 |
| GE 16 PB | 16 | 21 | 15 | 19.4 | 38 | 1 | 28.6 | 51.4 | 10.3 | 24 | 0.116 |
| GE 17 PB | 17 | 22 | 16 | 20.6 | 40 | 1 | 30.1 | 57.9 | 11.6 | 23 | 0.135 |
| GE 18 PB | 18 | 23 | 17 | 22 | 42 | 1.5 | 31.75 | 64.8 | 13 | 23 | 0.157 |
| GE 20 PB | 20 | 25 | 18 | 24.4 | 46 | 1.5 | 35 | 75.4 | 15 | 24 | 0.2 |
| GE 22 PB | 22 | 28 | 20 | 25.8 | 50 | 1.5 | 38.1 | 91.4 | 18.3 | 23 | 0.262 |
| GE 25 PB | 25 | 31 | 22 | 29.6 | 56 | 1.5 | 42.9 | 113.2 | 22.6 | 23 | 0.362 |
| GE 28 PB | 28 | 35 | 25 | 32.3 | 62 | 1.5 | 47.8 | 142.9 | 71.5 | 22 | 0.5 |
| GE 30 PB | 30 | 37 | 26 | 34.8 | 67 | 2 | 50.8 | 158.5 | 31.7 | 23 | 0.608 |



4FP...C FORCELLE YOKES

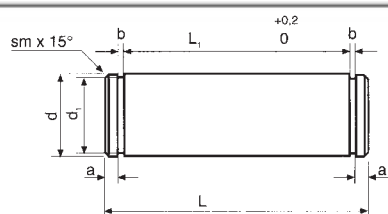
- MATERIALE 9 SMnPb28, ZINCATO
- MATERIAL 9 SMnPb28, GALVANIZED

DIN 71752 - ISO 8140 (CETOP)



| SIGLA CODE | PASSO DEL FILETTO THREAD LEAD | a | VALORI TOLLERANZA TOLERANCE VALUES | | b | d ₁ | VALORI TOLLERANZA TOLERANCE VALUES | | d ₂ | e | f | L | L ₁ | n | r | FATTORI DI CARICO LOAD FACTOR Statico C ₀ Static C ₀ KN | PESO WEIGHT kg. |
|--------------------|-------------------------------------|----|---------------------------------------|--------|----|----------------|---------------------------------------|---|----------------|----|-----|-----|----------------|----|-----|--|-----------------------|
| | | | a (B12) | | | | d ₁ (H8) | | | | | | | | | | |
| 4FP 10x20C | 10x1,25 | 10 | +0,150 | +0,300 | 20 | 10 | +0,022 | 0 | 18 | 15 | 0,5 | 52 | 40 | 20 | 0,5 | 2,0 | 0,070 |
| 4FP 12x24C | 12x1,25 | 12 | +0,150 | +0,330 | 24 | 12 | +0,027 | 0 | 20 | 18 | 0,5 | 62 | 48 | 24 | 0,5 | 2,88 | 0,120 |
| 4FP 16x32C | 16x1,5 | 16 | +0,150 | +0,330 | 32 | 16 | +0,027 | 0 | 26 | 24 | 1 | 83 | 64 | 32 | 1 | 5,12 | 0,250 |
| 4FP 20x40C | 20x1,5 | 20 | +0,160 | +0,370 | 40 | 20 | +0,033 | 0 | 34 | 30 | 1 | 105 | 80 | 40 | 1 | 8,0 | 0,550 |
| 4FP 25x50C* | 24x2 | 25 | +0,160 | +0,370 | 50 | 25 | +0,033 | 0 | 42 | 36 | 1 | 132 | 100 | 50 | 1 | 12,5 | 1,100 |
| 4FP 30x54C* | 27x2 | 30 | +0,160 | +0,370 | 55 | 30 | -0,033 | 0 | 48 | 38 | 1 | 148 | 110 | 54 | 1 | 12,5 | 1,460 |
| 4FP 35x72C* | 36x2 | 35 | +0,170 | +0,420 | 70 | 35 | +0,039 | 0 | 60 | 40 | 1 | 188 | 144 | 72 | 1 | 24,5 | 3,270 |

(*) DIMENSIONI NON A NORMA (*) DIMENSIONS DO NOT FOLLOW THE STANDARDS



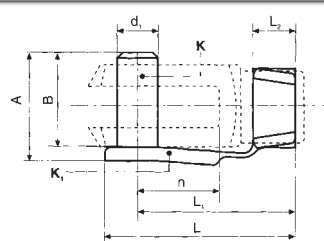
PF...C PERNI PER FORCELLE PINS FOR YOKES

- MATERIALE 9 SMnPb28, ZINCATO
- MATERIAL 9 SMnPb28, GALVANIZED



NORMA ISO (CETOP)

| SIGLA CODE | d (h11) | L | d ₁ | L ₁ | a | b | PESO WEIGHT Kg. |
|---------------|------------|----|----------------|----------------|-----|-----|-----------------------|
| PF10C | 10 | 25 | 9,6 | 20 | 1,5 | 1,1 | 0,015 |
| PF12C | 12 | 30 | 11,5 | 24 | 2 | 1,1 | 0,026 |
| PF16C | 16 | 39 | 15,2 | 32 | 2,4 | 1,1 | 0,061 |
| PF20C | 20 | 48 | 19 | 40 | 2,9 | 1,3 | 0,118 |
| PF25C | 25 | 60 | 23,9 | 50 | 3,7 | 1,3 | 0,230 |
| PF30C | 30 | 65 | 28,6 | 55 | 3,4 | 1,6 | 0,350 |
| PF35C | 35 | 84 | 33,4 | 70 | 5,4 | 1,6 | 0,620 |

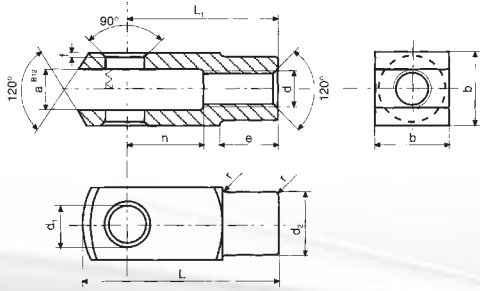


CF CLIPS PER FORCELLE LOCKABLE PINS



| SIGLA CODE * | d ₁ | n | A | B | L | L ₁ | L ₂ | PESO WEIGHT Kg. |
|--------------------|----------------|----|----|----|----|----------------|----------------|-----------------------|
| CF 10x20 | 10 | 20 | 26 | 23 | 46 | 39 | 10 | 0,018 |
| CF 12x24 | 12 | 24 | 32 | 28 | 55 | 47 | 12 | 0,032 |
| CF 16x32 | 16 | 32 | 40 | 36 | 72 | 62 | 14 | 0,067 |
| CF 20x40 | 20 | 40 | 48 | 44 | 88 | 72 | 16 | 0,130 |

(*) ZINCATE
(*) GALVANIZED



4FP

FORCELLE CON FORO FILETTATO YOKES WITH THREADED HOLE

- MATERIALE 9 SMnPb28, ZINCATO
- MATERIAL 9 SMnPb28, GALVANIZED

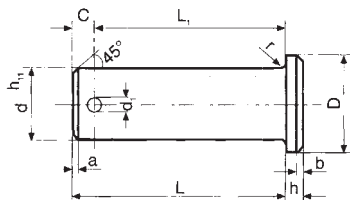


UNI 1676 - DIN 71752

| SIGLA CODE | PASSO DEL FILETTO THREAD LEAD | a | VALORI TOLLERANZA TOLERANCE VALUES | | b | d ₁ | VALORI TOLLERANZA TOLERANCE VALUES | | d ₂ | e | f | L | L ₂ | n | PESO WEIGHT |
|------------------|-------------------------------------|----|---------------------------------------|--------|----|----------------|---------------------------------------|--------|----------------|------|-----|-----|----------------|----|----------------|
| | | | a (B12) | | | | d ₁ (H8) | | | | | | | | |
| 4FP 4x8 | 4x0,7 | 4 | +0,140 | +0,260 | 8 | 4 | 0 | +0,018 | 8 | 6 | 0,5 | 21 | 16 | 8 | 0,005 |
| 4FP 5x10 | 5x0,8 | 5 | +0,140 | +0,260 | 10 | 5 | 0 | +0,018 | 9 | 7,5 | 0,5 | 26 | 20 | 10 | 0,009 |
| 4FP 6x12 | 6x1 | 6 | +0,140 | +0,260 | 12 | 6 | 0 | +0,018 | 10 | 9 | 0,5 | 31 | 24 | 12 | 0,015 |
| 4FP 8x16 | 8x1,25 | 8 | +0,150 | +0,300 | 16 | 8 | 0 | +0,022 | 14 | 12 | 0,5 | 42 | 32 | 16 | 0,036 |
| 4FP 10x20 | 10x1,5 | 10 | +0,150 | +0,300 | 20 | 10 | 0 | +0,022 | 18 | 15 | 0,5 | 52 | 40 | 20 | 0,070 |
| 4FP 12x24 | 12x1,75 | 12 | +0,150 | +0,330 | 24 | 12 | 0 | +0,027 | 20 | 18 | 0,5 | 62 | 48 | 24 | 0,121 |
| 4FP 14x28 | 14x2 | 14 | +0,150 | +0,330 | 27 | 14 | 0 | +0,027 | 24 | 22,5 | 1 | 72 | 56 | 28 | 0,176 |
| 4FP 16x32 | 16x2 | 16 | +0,150 | +0,330 | 32 | 16 | 0 | +0,027 | 26 | 24 | 1 | 83 | 64 | 32 | 0,250 |
| 4FP 20x40 | 20x2,5 | 20 | +0,160 | +0,370 | 40 | 20 | 0 | +0,033 | 34 | 30 | 1 | 105 | 80 | 40 | 0,550 |
| 4FP 25x50 | 24x3 | 25 | +0,160 | +0,370 | 50 | 25 | 0 | +0,033 | 42 | 36 | 1 | 132 | 100 | 50 | 1,100 |

(*) H8 DOPO ZINCATURA. FEZ7 UNI 4721. A RICHIESTA SUPERFICIE GREZZA OLIATA

(*) H8 AFTER GALVANIZED TREATMENT. FEZ7 UNI 4721. BLANKED AND OILED SURFACE ON REQUEST



PF...T

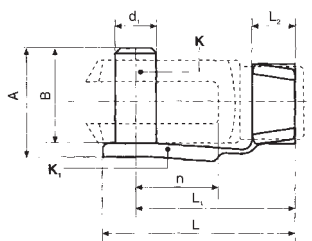
PERNI PER FORCELLE PINS FOR YOKES

- MATERIALE 9 SMnPb28, ZINCATO
- MATERIAL 9 SMnPb28, GALVANIZED



UNI 1710 - DIN 1434

| SIGLA CODE | d | L | h | a | b | D | r | d ₁ | c | L ₁ | PESO WEIGHT |
|---------------|----|----|-----|-----|-----|----|-----|----------------|-----|----------------|----------------|
| | | | | | | | | | | | kg. |
| PFT5 | 5 | 14 | 1,5 | 1 | 0,5 | 8 | 0,5 | 1,5 | 3 | 11 | 0,001 |
| PFT6 | 6 | 16 | 1,5 | 1 | 0,5 | 9 | 0,5 | 2 | 3 | 13 | 0,004 |
| PFT8 | 8 | 20 | 2 | 1 | 0,5 | 12 | 0,5 | 2 | 3 | 17 | 0,009 |
| PFT10 | 10 | 25 | 2 | 1,5 | 0,5 | 14 | 0,5 | 3 | 3,5 | 21,5 | 0,017 |
| PFT12 | 12 | 30 | 3 | 1,5 | 1 | 16 | 0,5 | 3 | 3,5 | 26,5 | 0,030 |
| PFT14 | 14 | 35 | 3 | 1,5 | 1 | 19 | 1 | 4 | 4 | 31 | 0,048 |
| PFT16 | 16 | 40 | 3 | 1,5 | 1 | 20 | 1 | 4 | 4 | 36 | 0,067 |



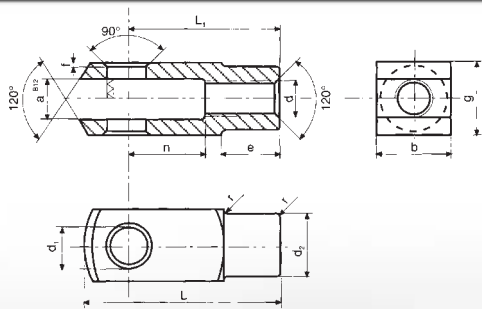
CF

CLIPS PER FORCELLE LOCKABLE PINS



| SIGLA CODE | d ₁ | n | A | B | L | L ₁ | L ₂ | PESO WEIGHT |
|-----------------|----------------|----|------|----|----|----------------|----------------|----------------|
| | | | | | | | | kg. |
| CF 4x8 | 4 | 8 | 11 | 9 | 19 | 15 | 5 | 0,002 |
| CF 5x10 | 5 | 10 | 13,5 | 12 | 23 | 19 | 6 | 0,003 |
| CF 6x12 | 6 | 12 | 16 | 14 | 28 | 23 | 6 | 0,005 |
| CF 8x16 | 8 | 16 | 22 | 19 | 37 | 31 | 8 | 0,011 |
| CF 10x20 | 10 | 20 | 26 | 23 | 46 | 39 | 10 | 0,019 |
| CF 12x24 | 12 | 24 | 32 | 28 | 55 | 47 | 12 | 0,032 |
| CF 14x28 | 14 | 28 | 35 | 31 | 62 | 52 | 14 | 0,047 |
| CF 16x32 | 16 | 32 | 40 | 36 | 72 | 62 | 14 | 0,067 |
| CF 20x40 | 20 | 40 | 48 | 44 | 88 | 72 | 16 | 0,130 |

- (*) ZINCATE
- (*) GALVANIZED



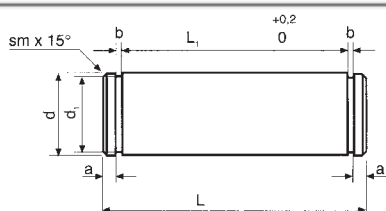
4FC... FORCELLE YOKES

- MATERIALE 9 SMnPb28, ZINCATA
- MATERIAL 9 SMnPb28, GALVANIZED

CNOMO 06 07 13



| SIGLA CODE | PASSO DEL FILETTO THREAD LEAD | a | VALORI TOLLERANZA TOLERANCE VALUES | | b | g | d ₁ | VALORI TOLLERANZA TOLERANCE VALUES | | d ₂ | e | f | L | L ₁ | n | r | PESO WEIGHT |
|------------------|-------------------------------------|----|---------------------------------------|--------|----|----|----------------|---------------------------------------|---|----------------|------|-----|-----|----------------|----|-----|----------------|
| | | | a (B12) | | | | | d ₁ (H8) | | | | | | | | | |
| 4FC 8x22 | 10x1,5 | 11 | +0,150 | +0,300 | 22 | 22 | 8 | +0,022 | 0 | 18 | 14 | 0,5 | 45 | 36 | 16 | 0,5 | 0,070 |
| 4FC 12x26 | 16x1,5 | 18 | +0,150 | +0,330 | 26 | 36 | 12 | +0,027 | 0 | 26 | 17 | 1 | 64 | 51 | 25 | 1 | 0,250 |
| 4FC 16x34 | 20x1,5 | 22 | +0,160 | +0,370 | 34 | 45 | 16 | +0,033 | 0 | 34 | 18,5 | 1 | 80 | 63 | 33 | 1 | 0,550 |
| 4FC 20x42 | 27x2 | 30 | +0,160 | +0,370 | 42 | 63 | 20 | - +0,033 | 0 | 48 | 30 | 1 | 105 | 85 | 40 | 1 | 1,460 |
| 4FC 25x50 | 36x2 | 40 | +0,170 | +0,420 | 50 | 80 | 25 | +0,039 | 0 | 60 | 45 | 1 | 140 | 115 | 40 | 1 | 3,270 |



PF...C PERNI PER FORCELLE PINS FOR YOKES

- MATERIALE 9 SMnPb28, ZINCATO
- MATERIAL 9 SMnPb28, GALVANIZED



CNOMO 06 07 13

| SIGLA CODE | d (h11) | L | d ₁ | L ₁ | a | b | PESO WEIGHT |
|---------------|------------|----|----------------|----------------|-----|-----|----------------|
| | | | | | | | Kg. |
| PFC 8 | 8 | 27 | 7,45 | 22,2 | 1,5 | 0,9 | 0,015 |
| PFC 12 | 12 | 43 | 11,2 | 36,2 | 2,2 | 1,2 | 0,026 |
| PFC 16 | 16 | 53 | 14,9 | 45,2 | 2,7 | 1,2 | 0,061 |
| PFC 20 | 20 | 72 | 18,7 | 63,2 | 2,9 | 1,4 | 0,118 |
| PFC 25 | 25 | 89 | 23,5 | 80,6 | 2,7 | 1,5 | 0,230 |